

E. EXAMPLE PROJECTS WHICH BEST ILLUSTRATE PROPOSED TEAM'S QUALIFICATIONS FOR THIS CONTRACT
(Present as many projects as requested by the agency, or 10 projects, If not specified. Complete one Section F for each project.)

20. EXAMPLE PROJECT KEY NUMBER
 5

21. TITLE AND LOCATION <i>(City and State)</i> Schuylkill River Park and Trail Bridge over CSX Railroad Philadelphia, PA	22. YEAR COMPLETED	
	PROFESSIONAL SERVICES 2007-Current	CONSTRUCTION (if Applicable) 2013 est.

23. PROJECT OWNER'S INFORMATION

a. PROJECT OWNER City of Philadelphia	b. POINT OF CONTACT NAME Joseph Syrnick, President & CEO Schuylkill River Development Corp	c. POINT OF CONTACT TELEPHONE NUMBER (215) 222-6030, Ext. 102
--	--	--

24. BRIEF DESCRIPTION OF PROJECT AND RELEVANCE TO THIS CONTRACT *(Include scope, size, and cost)*

Project Purpose: To fulfill an agreement between the City of Philadelphia and CSX to provide a safe and convenient crossing of the railroad tracks to the Schuylkill Banks for pedestrians and bicyclists, as well as add amenities.

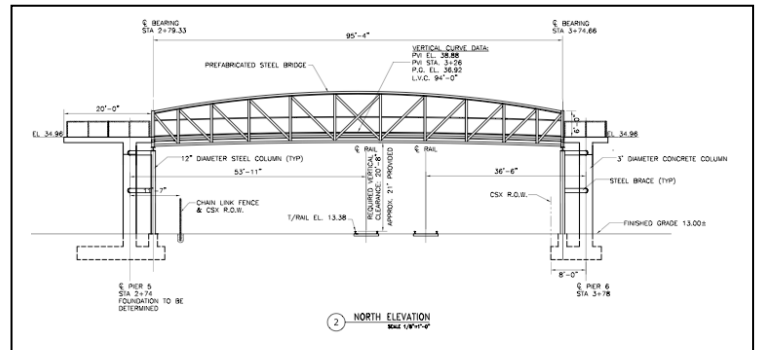
Scope: Historic research documents, presentation materials, existing conditions assessment, community workshops, schematic landscape designs, guideline standards coordination, final design documents, Philadelphia agency approvals, construction phase services for new bridge with amenities over the CSX rail line.

Relevance: Historic assessment and urban/recreational context; pedestrian route of travel, construction documents for paving, fencing, retaining walls, site furnishings, planting with LEED/sustainable elements; community presentations, local agency approvals and environmental permits.

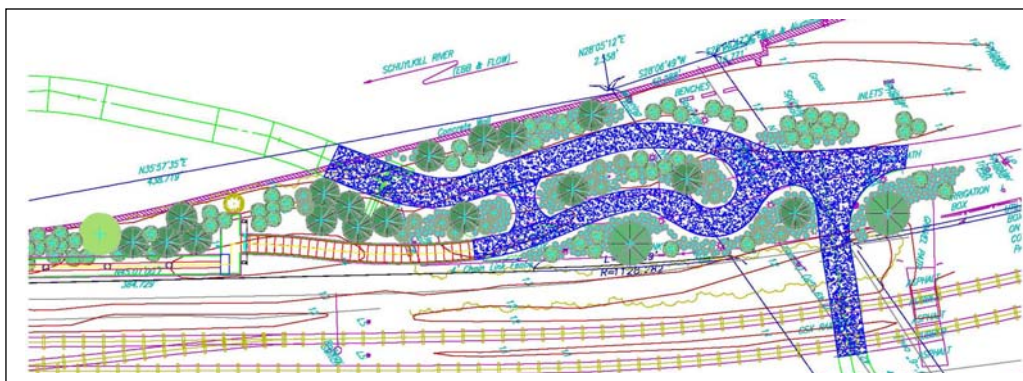
Construction: \$6M construction, currently in construction, 2013 completion estimated.



"Sunday in the Park" public event to present alternatives



Central bridge structure over the CSX rail line [HNTB Corp]



Schematic alignment and landscape design of the bridge's connection at the Schuylkill River Trail

25. FIRMS FROM SECTION C INVOLVED WITH THIS PROJECT

	(1) FIRM NAME	(2) FIRM LOCATION <i>(City and State)</i>	(3) ROLE
a.	Menke & Menke, LLC Landscape Architects & Planners	Swarthmore, Pennsylvania	Landscape Architects & Planners
b.	HNTB	Philadelphia, Pennsylvania	Architecture and Engineering