

E. EXAMPLE PROJECTS WHICH BEST ILLUSTRATE PROPOSED TEAM'S QUALIFICATIONS FOR THIS CONTRACT

(Present as many projects as requested by the agency, or 10 projects, If not specified. Complete one Section F for each project.)

20. EXAMPLE PROJECT KEY NUMBER

2

21. TITLE AND LOCATION *(City and State)*

SEPTA 69th Street Transportation Center Parking Garage
Upper Darby, PA

22. YEAR COMPLETED

PROFESSIONAL SERVICES
2010 - Current

CONSTRUCTION (if Applicable)
2013 est.

23. PROJECT OWNER'S INFORMATION

a. PROJECT OWNER

SEPTA / Upper Darby Township

b. POINT OF CONTACT NAME

Jack McElwee, Project Manager

c. POINT OF CONTACT TELEPHONE NUMBER

(215) 580-3787

24. BRIEF DESCRIPTION OF PROJECT AND RELEVANCE TO THIS CONTRACT *(Include scope, size, and cost)*

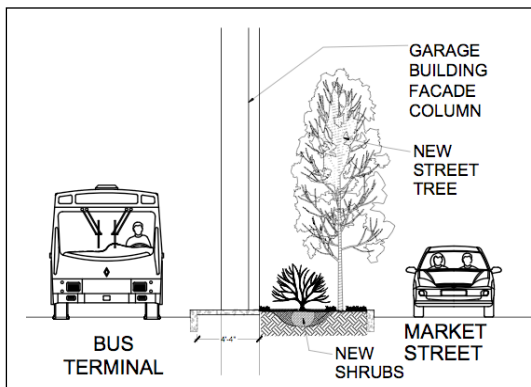
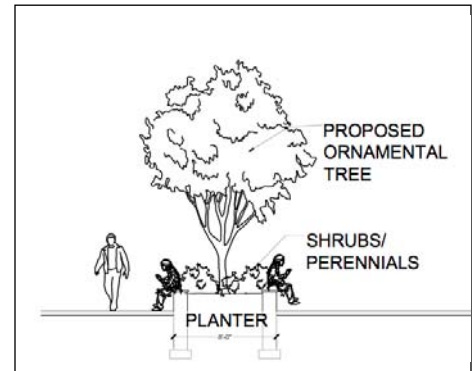


SketchUp view of the proposed plaza and pedestrian connections between the Center and the new garage

Location: 69th St. Transportation Center, Market Street (Route 3) to Chatham Rd.

Project Purpose: New 4-story garage with connections to the existing historic terminal building and major site improvements.

Scope of Work: Historic, site context and code assessment; Design Manual component; site design consultations for vehicular and pedestrian circulation; LEED coordination; streetscape and plaza documentation for site furnishings, planting and paving; presentation materials; Planting details for bioretention beds and other BMP elements; Township approvals, and construction phase services.



Relevance: SEPTA project with design manual and standards; streetscape, paving, planting and site furnishing documents; LEED/BMP bioretention beds; local township coordination with local master plan and streetscape standards; multi-disciplinary team agency coordination, multiple construction phases.

Construction: \$22.6M est.

25. FIRMS FROM SECTION C INVOLVED WITH THIS PROJECT

	(1) FIRM NAME	(2) FIRM LOCATION <i>(City and State)</i>	(3) ROLE
a.	Menke & Menke, LLC Landscape Architects & Planners	Swarthmore, Pennsylvania	Landscape Architects & Planners
b.	Tim Haahs & Associates, Inc.	Blue Bell, Pennsylvania	Project Managers and Parking Garage Design

c.	(1) FIRM NAME HNTB	(2) FIRM LOCATION <i>(City and State)</i> Harrisburg, PA	(3) ROLE Engineering
d.	(1) FIRM NAME .	(2) FIRM LOCATION <i>(City and State)</i>	(3) ROLE
e.	(1) FIRM NAME	(2) FIRM LOCATION <i>(City and State)</i>	(3) ROLE